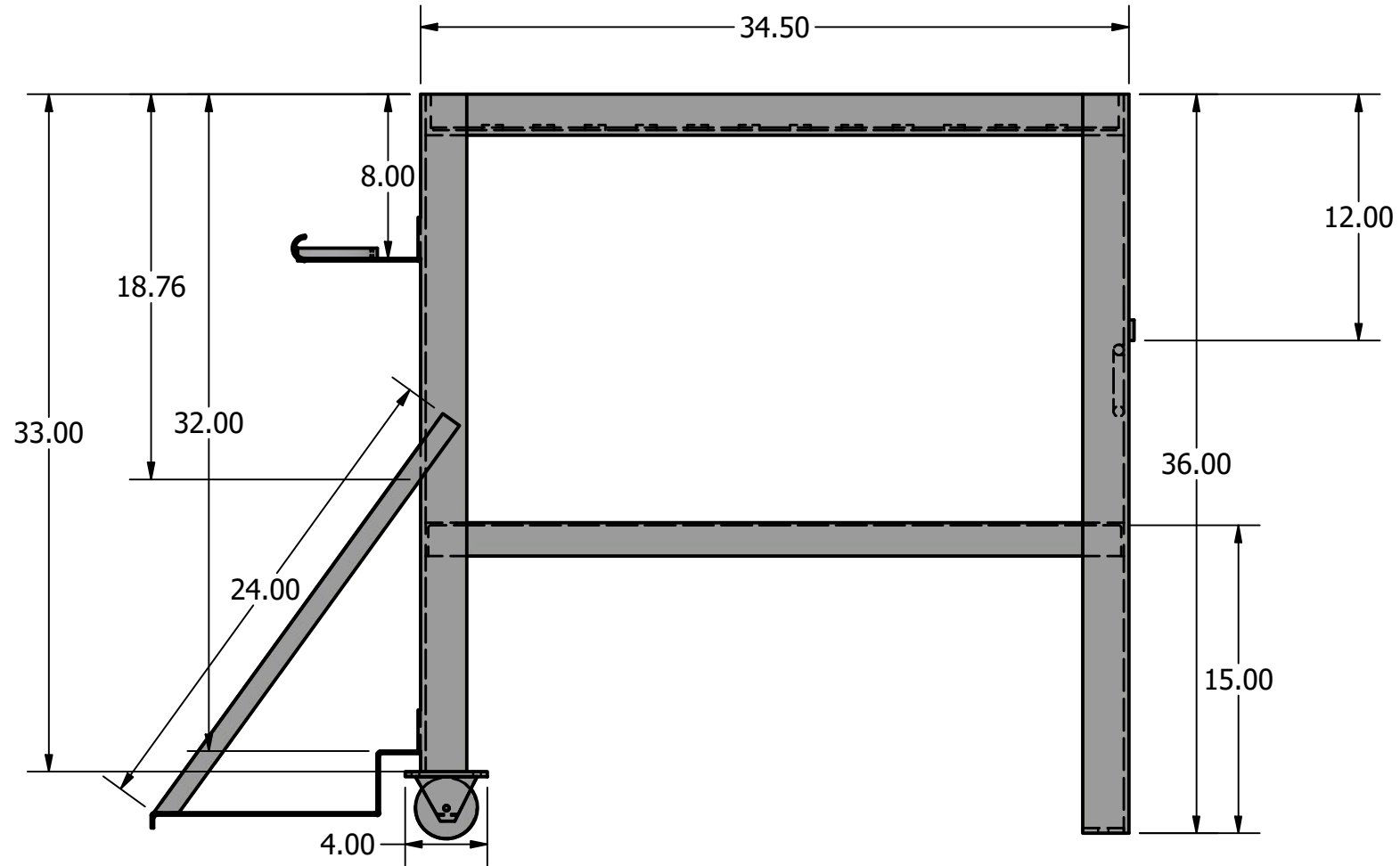
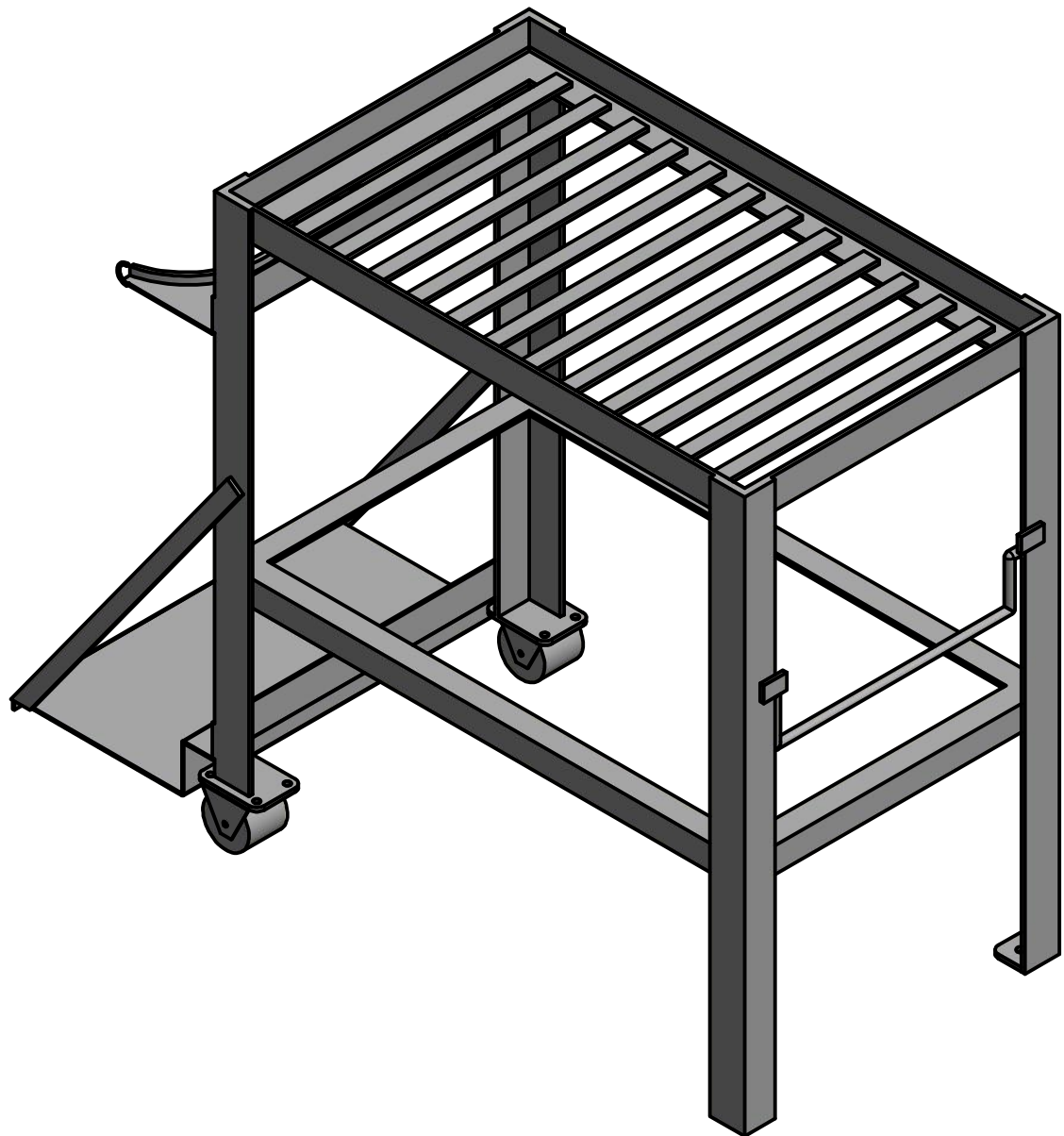
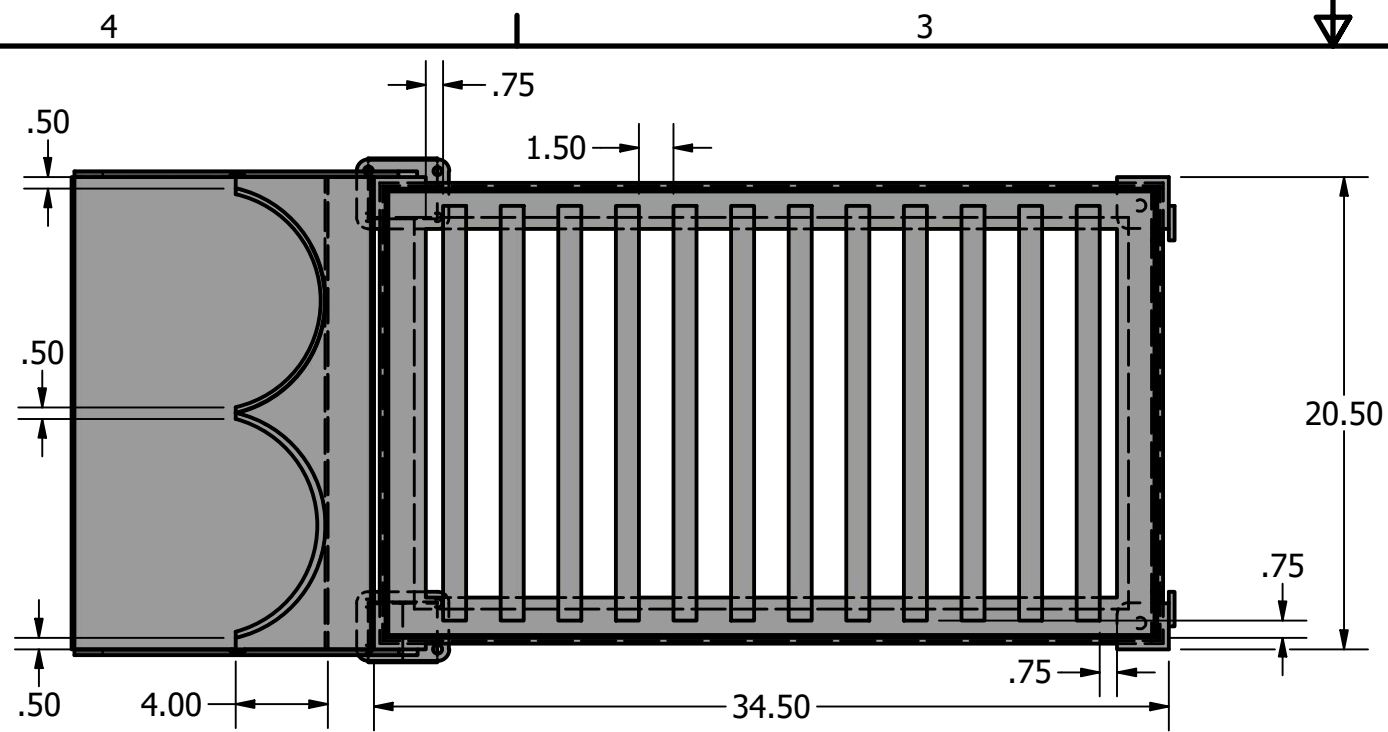


PARTS LIST			
ITEM	QTY	PART NUMBER	DESCRIPTION
A	2	1/4"x2"x2" Angle 36"	36" Legs
B	2	1/4"x2"x2" Angle 33"	33" Legs
C	2	1/4"x2"x2" Angle 34"	34" Upper Table side
D	2	1/4"x2"x2" Angle 20"	20" Upper Table side
E	2	1/8"x1.5"x1.5" Angle 34"	34" Lower Leg Support
F	2	1/8"x1.5"x1.5" Angle 20"	20" Lower Leg Support
G	12	1/4"x1" Flat bar 18"	18" Table slats
H	2	1/4"x1" Flat bar 24"	24" Tank support
I	2	1/4"x1" Flat bar 2"	2" Handle bump stop
J	1	1/8"x 20.5"x7" Pre Bent	Upper Tank Bracket
K	1	1/8"x 20.5"x11" Pre Bent	Lower Tank Shelf
L	2	1/4"x4"x3" Pre cut /drilled	Caster/wheel Plate
M	2	1/4"x1.75"x1.75" Pre cut	Leg Bottom
N	1	1/2" Round Rod Pre Bent	Handle
O	2	1/2" ID Tube x 1.5"	Handle Mount
P	2	1/8" Hook	Safety Chain Hooks
Q	1	Chain	Tank Safety Chain
R	2	1/2" Nut and Bolt	Leaving Bolts
S	1	1/4"x1/2" Flat Bar Half Roud	Upper Tank bracket Half Round

Unless Otherwise Specified  
Dimensions are in Inches

<b>Welding Metal Fab Contest</b>			
TITLE: STATE			
<b><i>SkillsUSA.</i></b>			
SIZE		DWG NO <b>OXYFUEL Table</b>	REV:A
SCALE: .012:1		Sheet 1 of 6	



<b>Welding Metal Fab Contest</b>			
TITLE: STATE			
<b>SkillsUSA.</b>			
SIZE		DWG NO <b>OXYFUEL Table</b>	REV:A
SCALE: .012:1		Sheet 2 of 6	

4

3

2

1

B

B

A

A

A

A

4

3

2

1

DETAIL D  
SCALE 0.24 : 1

SMAW  
Weld 2 sides  
Two Places

.25

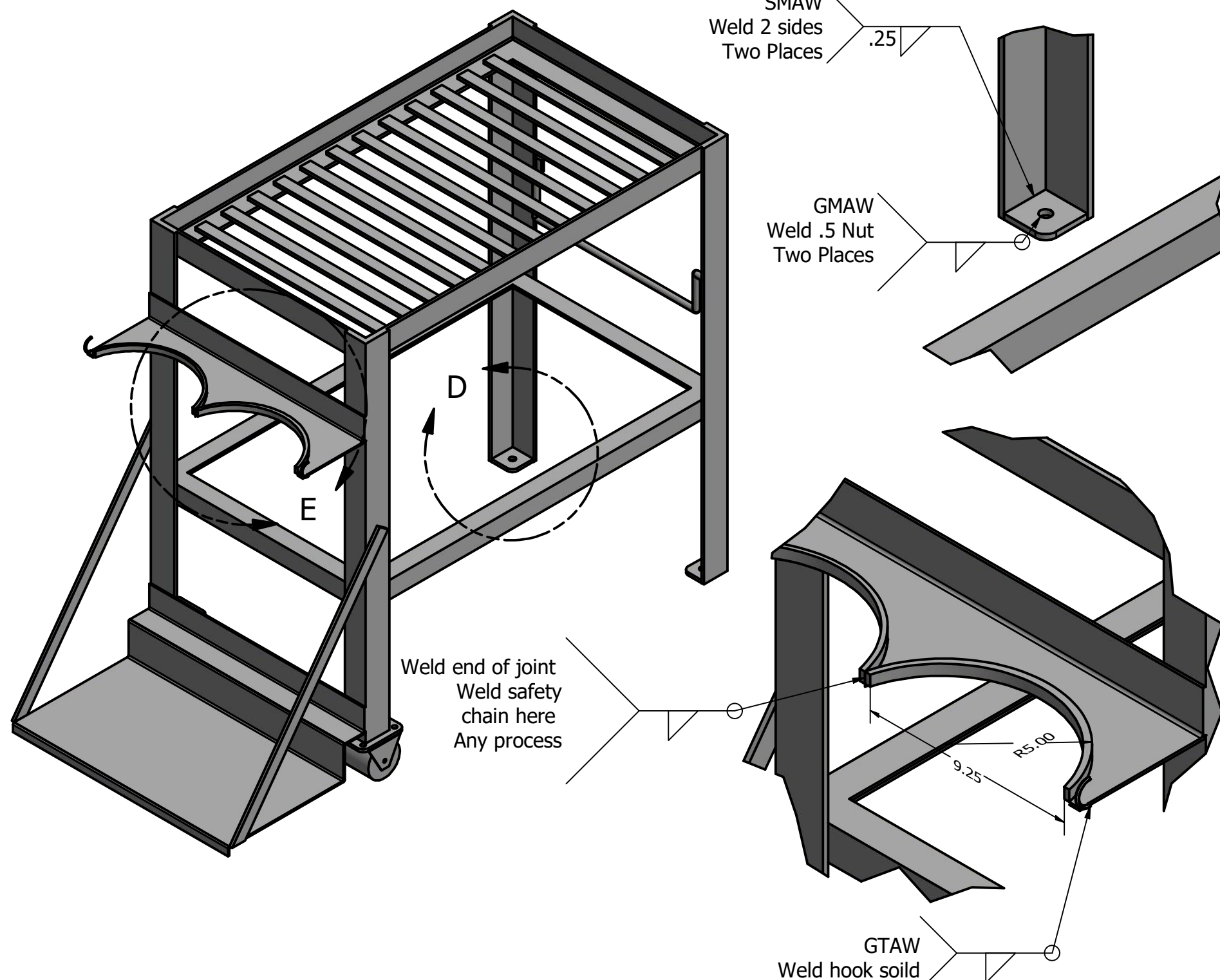
GMAW  
Weld .5 Nut  
Two Places

Weld end of joint  
Weld safety  
chain here  
Any process

GTAW  
Weld hook soild

9.25

R5.00



**All Processes to be completed with the Materials Provided. All Weld Processes/Procedures Assigned By The Technical Commtee.**

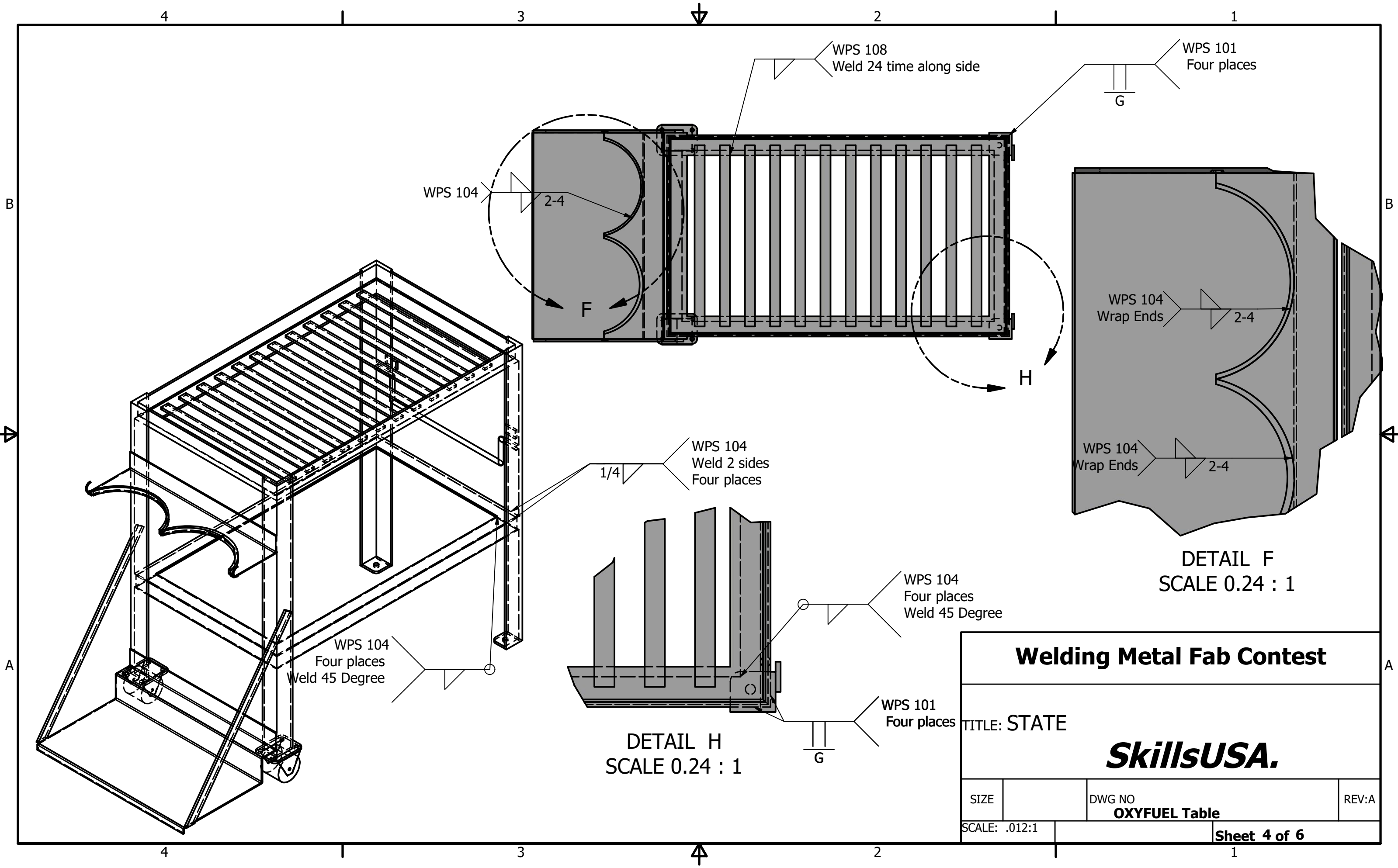
- 1.** Tack Complete Assembly in Any Postion. With Any Processes.
- 2.** ALL Cuts to be made With OFC. May Use Grinder to Clean Cuts up.
- 3.** All Corner Joints Should be 45\* Degrees.
- 4.** Weld Tank Safety Chain in Center Of the Top Tank Bracket Using Center Link of Chain. Chain Must go around tanks and hook onto hooks. Weld With any Process
- 5.** Leveling bolts should move freely. Welded Nuts May be cleaned with a tread tap that will be provide.
- 6.** Tank Plates are Pre Bent. Bottom Leg Plates are Pre Cut.
- 7.** Assembled projects needs to Be Square With in +/- .125 in with in 24"
- 8.** All Surface Slag, Spatter, and smoke needs to be removed from all joints and surrounding area.
- 9.** Instal tool Tray after project is completed

**Welding Metal Fab Contest**

TITLE: STATE

**SkillsUSA.**

SIZE	DWG NO	REV:A
	<b>OXYFUEL Table</b>	
SCALE: .012:1	<b>Sheet 3 of 6</b>	



# Welding Metal Fab Contest

TITLE: STATE

## SkillsUSA.

SIZE

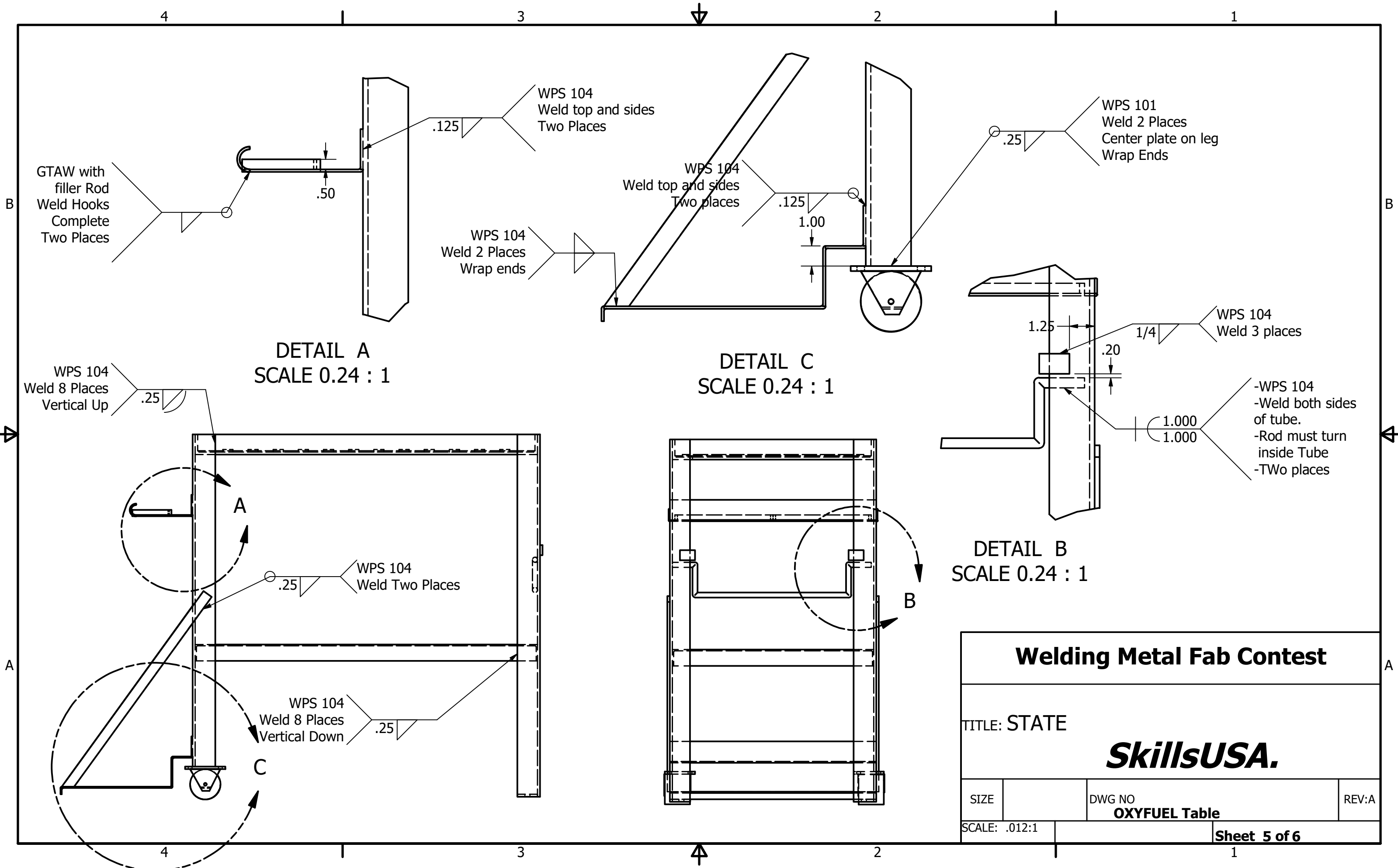
DWG NO

**OXYFUEL Table**

REV:A

SCALE: .012:1

Sheet 4 of 6



# Welding Metal Fab Contest

TITLE: STATE

**SkillsUSA.**

SIZE

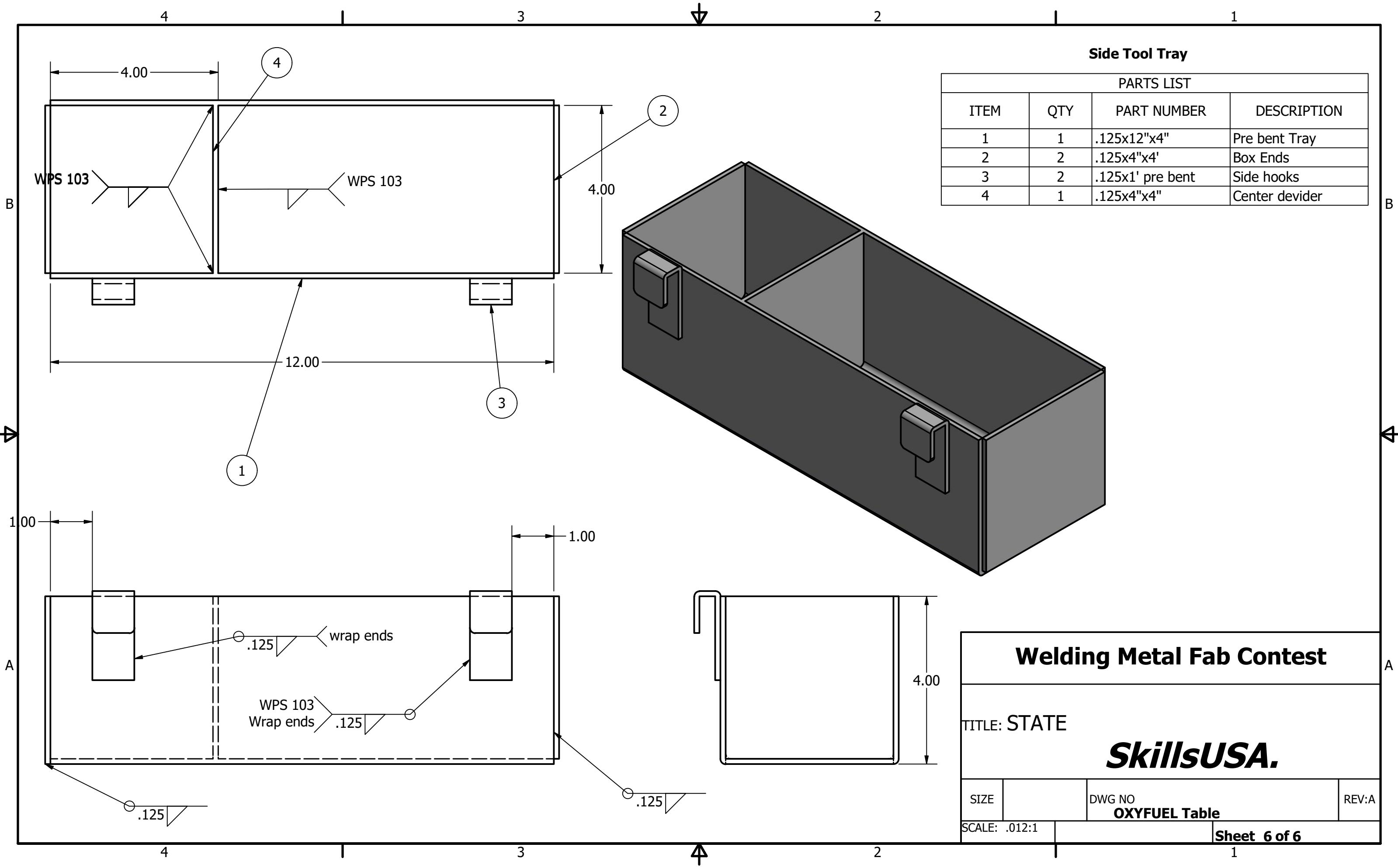
DWG NO

**OXYFUEL Table**

REV:A

SCALE: .012:1

Sheet 5 of 6



**Side Tool Tray**

PARTS LIST			
ITEM	QTY	PART NUMBER	DESCRIPTION
1	1	.125x12"x4"	Pre bent Tray
2	2	.125x4"x4"	Box Ends
3	2	.125x1' pre bent	Side hooks
4	1	.125x4"x4"	Center divider

**Welding Metal Fab Contest**

TITLE: STATE

**SkillsUSA.**

SIZE	DWG NO	REV:A
SCALE: .012:1	<b>OXYFUEL Table</b>	
		Sheet 6 of 6